

Green light for Stanhope Gate Architecture's classical Mayfair building

30 December 2013 | By [Elizabeth Hopkirk](#)

Building replaces 1930s flats

Stanhope Gate Architecture has won planning for a new apartment building in Mayfair.



Stanhope Gate Architecture's design for a new apartment building on Upper Brook Street in Mayfair.

The eight-storey building replaces a 1930s apartment block on Upper Brook Street.

The original 1750s building that occupied the site was grander in scale and detail than its neighbours, said Alireza Sagharchi, principal of Stanhope Gate Architecture.

Stanhope Gate Architecture's design for a new apartment building on Upper Brook Street in Mayfair.

"So in discussion with Westminster planning and conservation officers, it was agreed that the replacement building should be of similarly unique character, whilst continuing to integrate with the neighbouring Georgian context," he said.

strips.

[betty elwyn](#) | 31 December 2013 10:42 am

PITA

[Andrew Morris](#) | 31 December 2013 7:53 pm

Yes– as you were saying. Perhaps your keyboard has got stuck. Or perhaps you don't know what this discussion is about.

[Khabdina El Sardina](#) | 31 December 2013 9:16 pm

There's a straight line missing in the decoration, no?

[Slim Tuggins](#) | 2 January 2014 9:50 am

I don't know much about anything, but in this case even I can tell how egregious that triangular cake decoration is. I'm with Mr. Morris on this one.

[Simon White](#) | 2 January 2014 1:04 pm

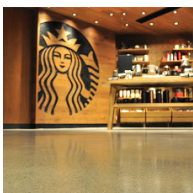
It's possible to get too tied up in the "rules" of classicism. Let's face it the open and broken pediments of mannerism or the baroque hardly fit the "rules". But then a trip to Leptis Magna or Palmyra would demonstrate that the Romans didn't exactly follow the "rules" terribly well either.

I'd agree that a chevron string course isn't a particularly sophisticated device for a modern take on the sort of aristocratic town house that previously sat on the site. But then nor is the Juliet balcony sprouting from the third floor.

Maybe 6/10 for the lower half and 3/10 for the upper: could do better.

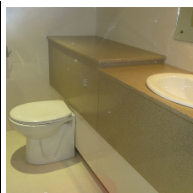


LATEST CASE STUDIES



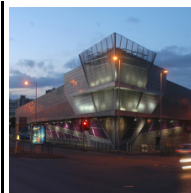
Vibrant Flowcrete resin terrazzo floor at Starbucks

[Read More](#)



En-suite facilities from Taplanes® at Winchester College

[Read More](#)



Architectural mesh for PC World

[Read More](#)

[Desktop Site](#) | [Mobile Site](#)